



9th Annual Conference

From Surviving to  
**THRIVING**  
in the Built Environment

26 & 27 May 2022

Cape Town International Convention Centre

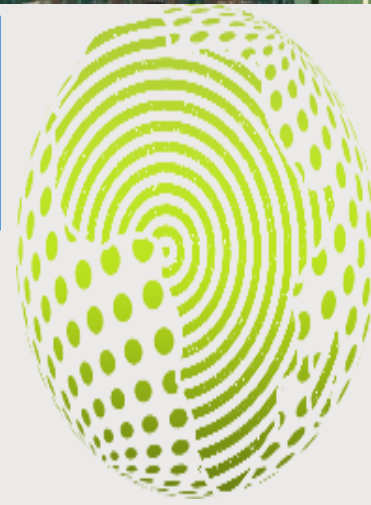


SESSION 1: ARE OUR INFRASTRUCTURE  
PROCUREMENT POLICIES AND SUPPLY CHAIN  
MANAGEMENT REGULATIONS FIT FOR PURPOSE?

Contributing to Sustainable Development and Social  
Cohesion through Infrastructure Procurement

Presented by: Newton Baloyi

Date: 26 May 2022



**SEEDGE**  
SOCIO-ECONOMIC DEVELOPMENT GOVERNANCE AND ENVIRONMENT



## CONTENTS

- Fit for what purpose?
- Developmental Role of Infrastructure Procurement
- The Missing Link towards Inclusive Economic Growth
- The Creation of Social Cohesion and Sustainability
- Conclusions and Recommendations

# Is Infrastructure Procurement Fit for Purpose?

Fit for What Purpose?

INFRASTRUCTURE  
PROJECTS

COMMUNITIES



Threat to social cohesion and sustainability

**Infrastructure  
Opportunities**

**Community  
Needs**

SROI & IMPACT OBJECTIVES (SDGs, NDP)

| Description                      | Measures   |
|----------------------------------|--|
| SROI                             | <ul style="list-style-type: none"> <li>• Monetary benefit for every R _____ spent</li> <li>• SROI _____%</li> <li>• Payback Period ----- Years</li> </ul>  |
| 1, Social Impact                 | <ul style="list-style-type: none"> <li>• # of Households having access to social infrastructure</li> <li>• # of people off government grants or public support system</li> <li>• Poverty Alleviation – # of people</li> <li>• Poverty reduction – # of people</li> <li>• Unemployment Reduction – # of people</li> </ul> |
| 2. Economic Impact               | <ul style="list-style-type: none"> <li>• Direct procurement – R</li> <li>• Associated Secondary Opportunities – R</li> <li>• Economic Infrastructure Opportunities Unlocked – R</li> <li>• LED Impact of R_____ per annum plus R_____ once off</li> <li>• Host Community GDP Contribution – R_____</li> </ul>            |
| 3. Social Compact (Partnerships) | <ul style="list-style-type: none"> <li>• Leveraging partnerships to source additional community investment – R_____</li> <li>• Unlock secondary investments and Impact Funds R_____</li> </ul>   |
| 4. Sustainability                | <ul style="list-style-type: none"> <li>• Skills and Business capacity developed</li> <li>• LED Integration</li> </ul>  |

# Application Example

Beyond physical structure

Infrastructure Localisation  
Value Chain

Host Community  
Capacity Building

Social Cohesion &  
Shared Value

Impact Integration,  
Measurement and  
Evaluation



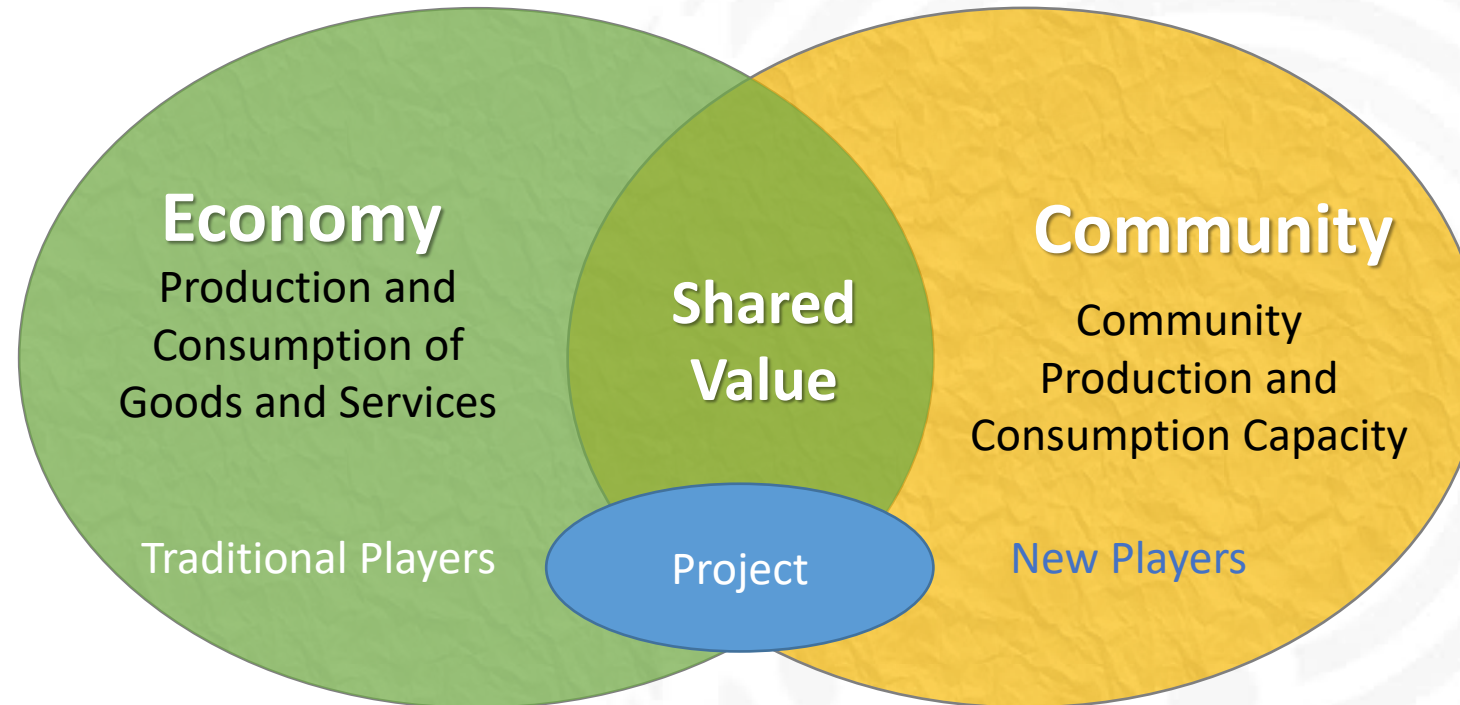
## SUSTAINABLE COMMUNITIES

1. Social and Economic Infrastructure
2. Meaningful economic participation
3. Equitable Access to Opportunities
4. Unlocking of human potential

INFRASTRUCTURE PROCUREMENT AS CATALYST

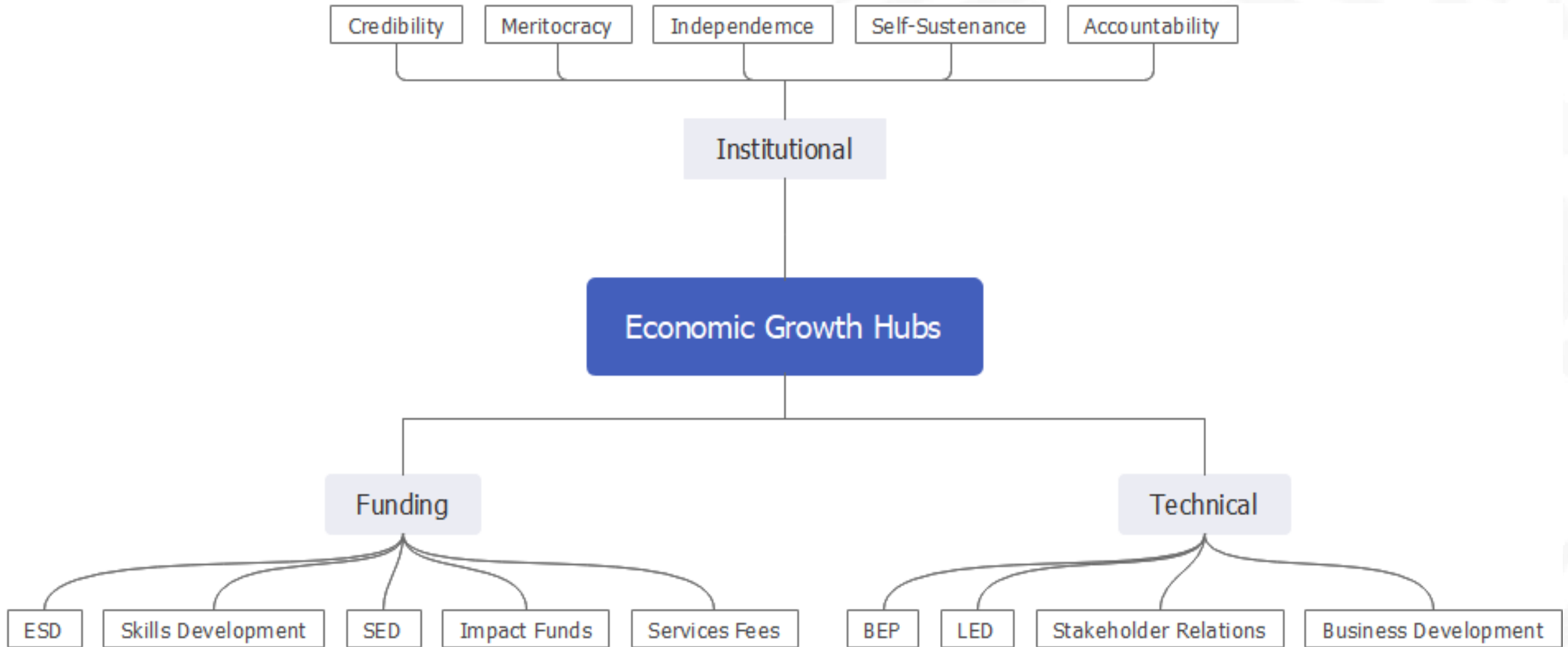
# The Missing Link

Accountability and Competence for Socioeconomic Performance Integration



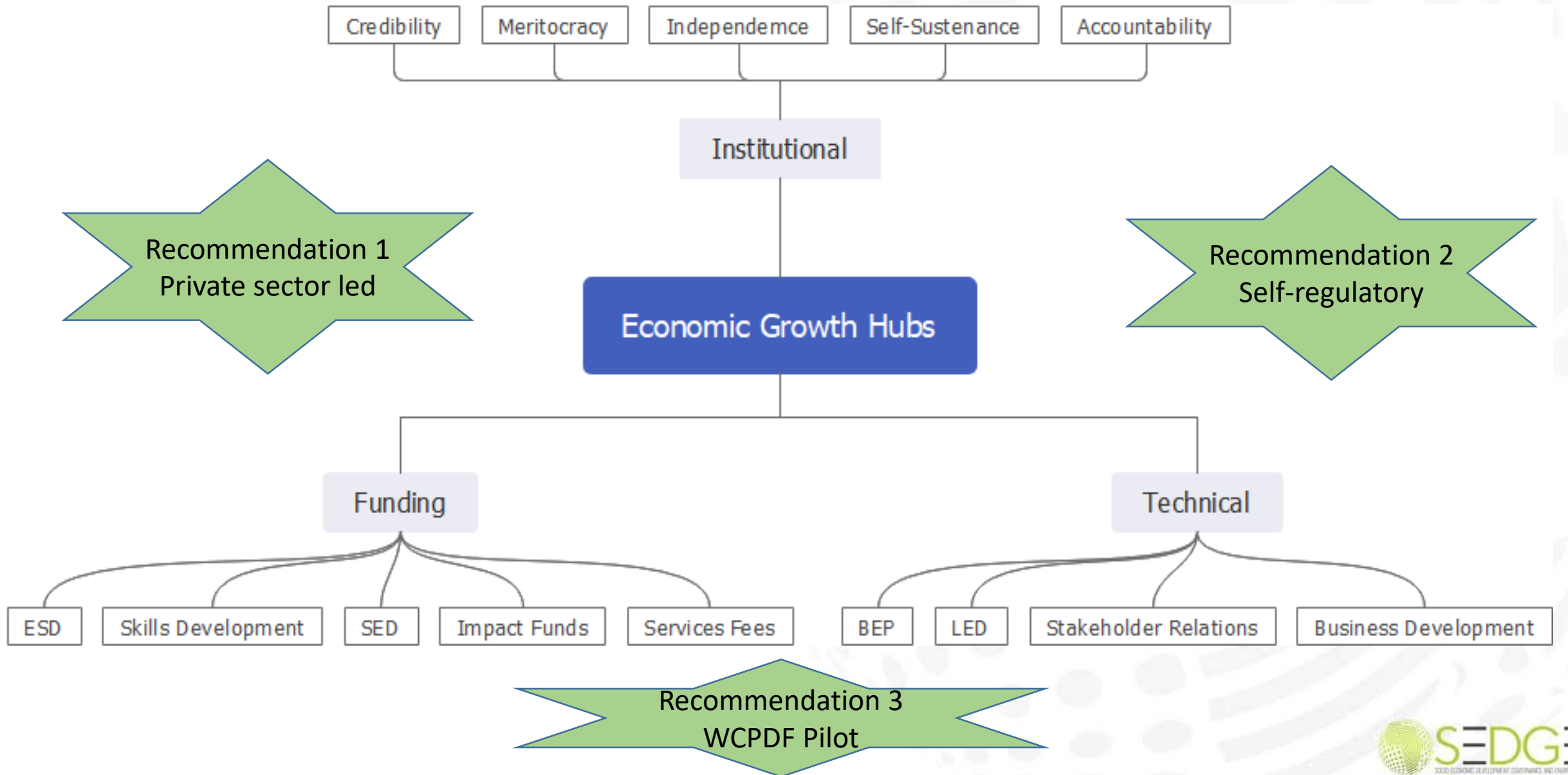
1. Role of BEP in positioning projects for impact
2. Dedicated Inclusive Economic Growth Programme

# Conclusions



Recommendation 3  
WCPDF Pilot

# Recommendations





# INTEGRATION FOR SUSTAINABLE IMPACT

CONTACT US

Email: [newton@sedgeimpact.com](mailto:newton@sedgeimpact.com)

Phone: +27(0)82 460 8790

Website: [www.sedgeimpact.com](http://www.sedgeimpact.com)